

ANNEX 2

Space Requirements

**DAED FOR THE PROPOSED
SITE DEVELOPMENT OF THE
TEACHING AND LEARNING
HUB – LEARNING COMMONS
COMPLEX**

EXISTING CONDITION - FACADE



Teaching and Learning Hub



Learning Commons

EXISTING CONDITION – BACK OF THE BLDG.



Teaching and Learning Hub



Learning Commons

EXISTING CONDITION – SIDE VIEWS OF THE BLDG.

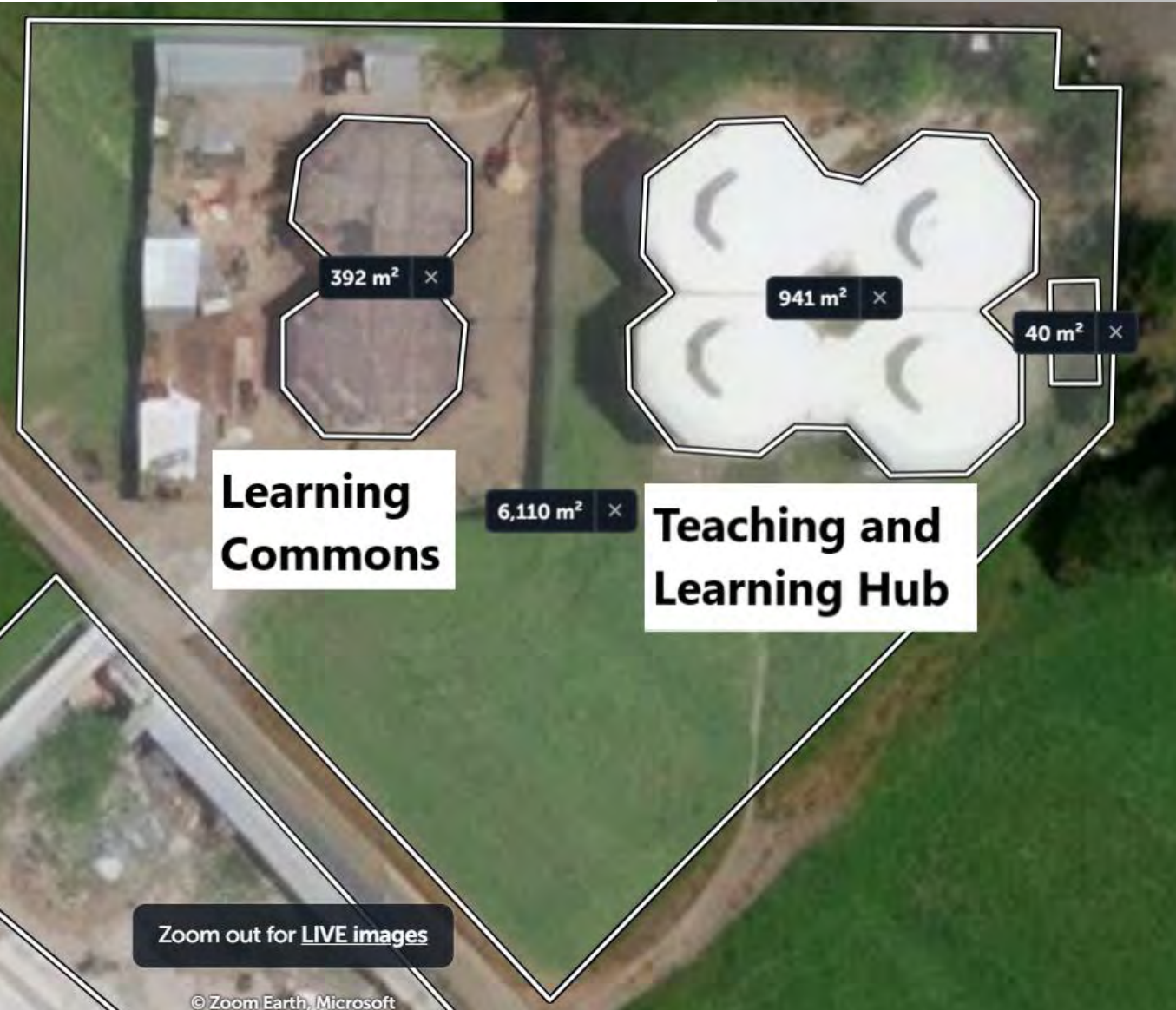


Teaching and Learning Hub



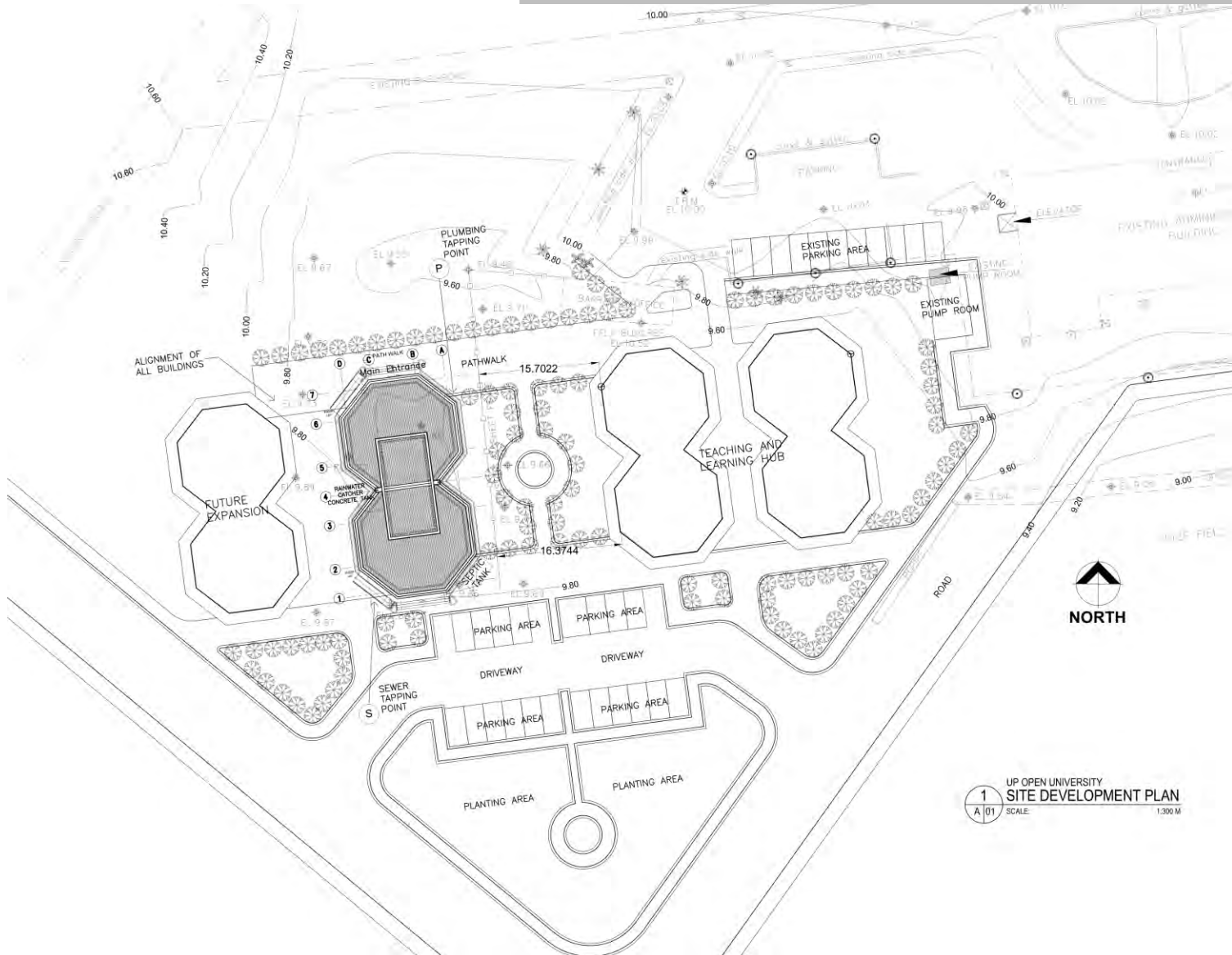
Learning Commons

SCOPE



- Area: 4,727 sq.m.
- Road Access and Service Driveway
- Parking Area
- Walkways (includes sidewalk and pathways)
- Landscape Area/Open Spaces
- Service Installation (includes street lights, utilities, drainage, etc.)

PROPOSED SITE DEVELOPMENT



DAED FOR THE PROPOSED SITE DEVELOPMENT OF THE ACADEMIC RESIDENCES

EXISTING CONDITION - FACADE



EXISTING CONDITION – BACK OF THE BLDG.



EXISTING CONDITION – SIDE VIEWS OF THE BLDG.



SCOPE



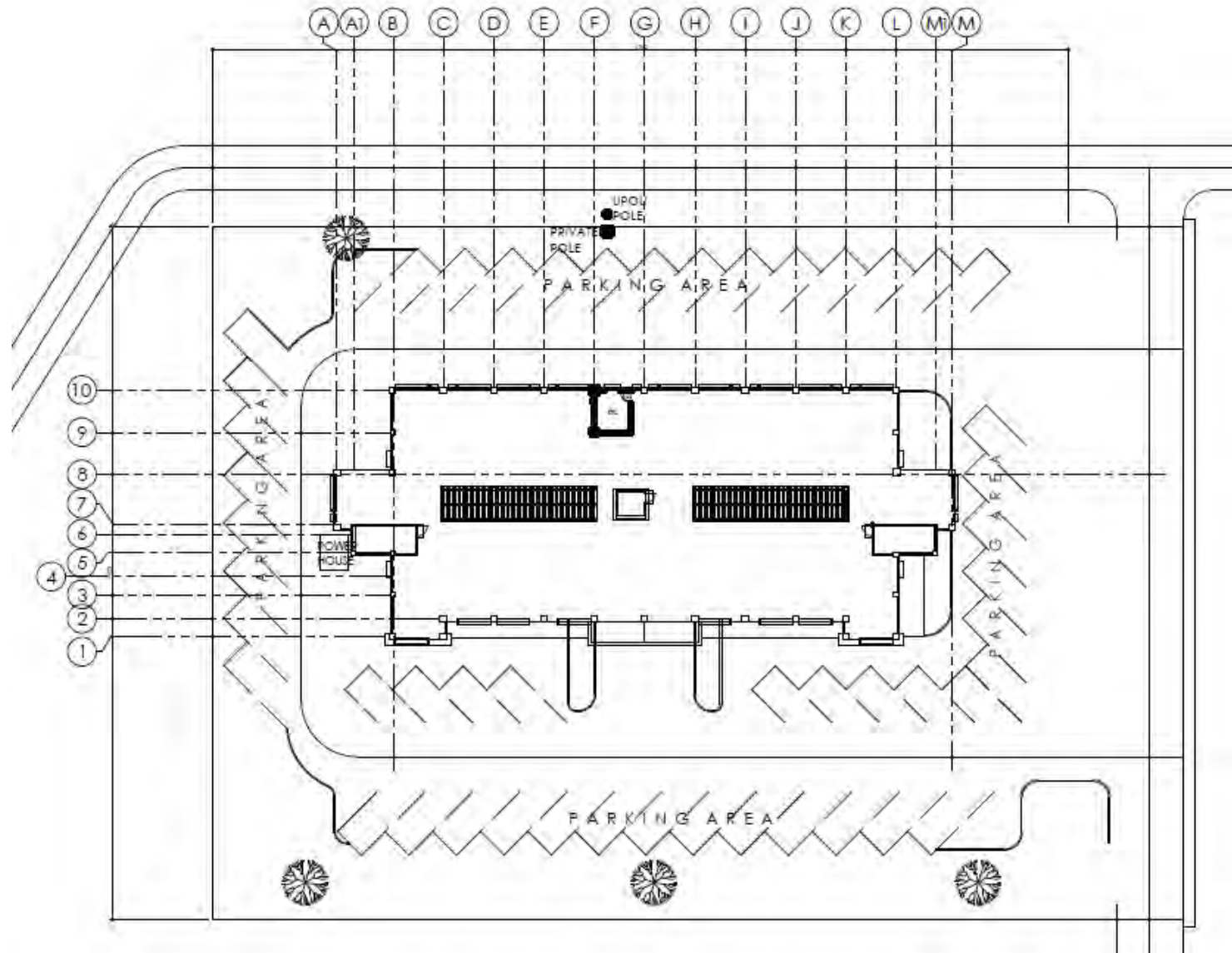
- Area: 2,876 sq.m.
- Road Access and Service Driveway
- Parking Area
- Walkways (includes sidewalk and pathways)
- Landscape Area/Open Spaces
- Service Installation (includes street lights, utilities, drainage, etc.)

Academic Residences

Zoom out for [LIVE images](#)

© Zoom Earth, Microsoft

PROPOSED SITE DEVELOPMENT



**DAED FOR THE PROPOSED
SITE DEVELOPMENT OF THE
WORLD-CLASS MULTIMEDIA
PRODUCTION BLDG.**

EXISTING CONDITION - FACADE



EXISTING CONDITION – BACK OF THE BLDG.

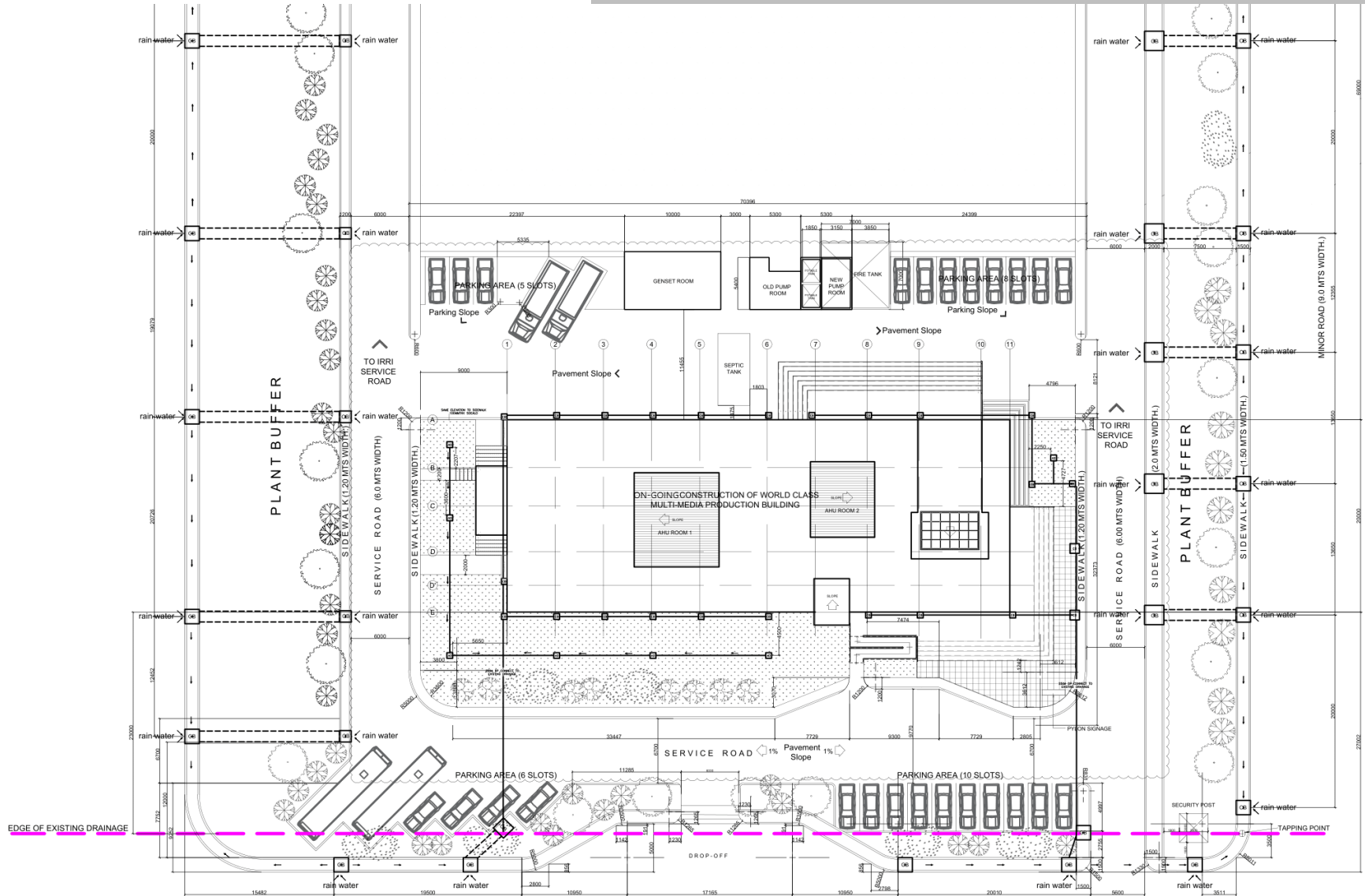


SCOPE

- Area: 2,920 sq.m.
- Road Access and Service Driveway
- Parking Area
- Walkways (includes sidewalk and pathways)
- Landscape Area/Open Spaces
- Service Installation (includes street lights, utilities, drainage, etc.)



PROPOSED SITE DEVELOPMENT



**DAED FOR THE PROPOSED
SITE DEVELOPMENT OF THE
INTERNATIONAL
CONVENTION CENTER**

EXISTING CONDITION - FACADE



EXISTING CONDITION – BACK OF THE BLDG.



EXISTING CONDITION – SIDE VIEWS OF THE BLDG.



SCOPE



- Area: 17,080 sq.m.
- Road Access and Service Driveway
- Parking Area
- Walkways (includes sidewalk and pathways)
- Landscape Area/Open Spaces
- Service Installation (includes street lights, utilities, drainage, etc.)

PROPOSED SITE DEVELOPMENT

